

**Ecoglo International Limited**

Technical Manual  
for  
Emergency Evacuation Plans

## **Contents:**

Photoluminescent Emergency Evacuation Plans MasterFormat Specification....	3
Appendices.....	8

Ecoglo Photoluminescent Emergency Evacuation Plans

This specification has been numbered, organized and formatted in accordance with the MasterFormat, Section Format and Page Format documents published jointly by Construction Specifications Institute (CSI).

It is offered as a guide to experienced and knowledgeable construction professionals who assume full responsibility for its interpretation and use.

**Square brackets [ ] containing text indicate an option to be considered/inserted by the specifier. Remove brackets and unused options before printing.**

## Section 10 45 00

## Photoluminescent Emergency Evacuation Plans

## Part 1 General

- 1.1 Summary
  - A Work Included: Supply and installation of photoluminescent emergency evacuation plans.
- 1.2 References
  - A [Fire Code of the Philippines]
  - B Underwriters Laboratories, Inc. (UL) UL 1994 Standard for Safety, Luminous Egress Path Marking Systems
  - C NFPA 170, Standard for Signs and Symbols
- 1.3 Design Requirements
  - A Emergency Evacuation Plans shall be posted on strategic and conspicuous locations in the building.
  - B Elements

All Emergency Evacuation Plans shall display the following information:

    - a. "You Are Here" / room number/ building marking;
    - b. Fire exits;
    - c. Primary Route to Exit (Nearest to the viewer);
    - d. Secondary Route to Exit (Second nearest to the viewer);
    - e. Fire alarm pull stations and annunciators;
    - f. Fire extinguishers/ hose cabinets;
    - g. Emergency Light;
    - h. First Aid Kits locations (if applicable);
    - i. Emergency Call stations (if applicable);
    - j. Areas of safe refuge (for high-rise building);
    - k. Assembly areas instructions;
    - l. "In Case of Emergency" instructions.
  - C Dimensions
    - a. 215.9mm high by 330.2mm wide if mounted in every rooms/spaces with a floor area of 50m<sup>2</sup> or less;
    - b. 457.2mm high by 609.6mm wide if mounted in rooms/spaces with a floor area from 51m<sup>2</sup> to 150m<sup>2</sup> including building lobbies upon entry, elevator lobbies at every floor, hallways and corridors on every bend/corner or at 15m interval in the case of long hallways; or
    - c. 609.6mm high by 914.4mm wide if mounted in rooms/spaces with a floor area of 151m<sup>2</sup> and above provided that it shall be mounted at multiple locations within the open space such as upon entry to the building, areas of assembly, or at every 25m interval in the case of auditoriums and gymnasiums.
  - D Symbols

Symbols/icons/logos to be used for the marking shall be in accordance with NFPA 170, Standard for Signs and Symbols.

1.4 . Quality Assurance

- A Manufacturer Qualifications: to have minimum of 20 years' experience with similar work.

1.5 Submittals

- A Submit the following [in accordance with Section 01 33 00 – Submittal Procedures]:

- 1 Product Data: Manufacturer's product data sheets for evacuation map/s used in project.
- 2 Manufacturer's Instructions: Pre-printed material describing installation of product, system or material, including special notices, safety data sheets outlining hazards and safety precautions and maintenance and cleaning instructions.
- 3 Test Reports: Showing compliance with required standards, ordinances and codes.
- 4 Substitutions: Substitutions must be submitted and approved prior to bid date. All requests shall include test results, product descriptions, confirmation of piece design and engineering calculations meeting design criteria.

1.6 Delivery, Storage and Handling

- A Handle and store products in a manner to prevent damage, deterioration and soiling to products, other building components, assemblies, other products, the structure, the Site and surrounding property and in accordance with manufacturer's instructions.
- B Store packaged or bundled products in original and undamaged containers and packaging with manufacturer's seals and labels intact. Do not remove from packaging or containers until ready to be installed.
- C Store products subject to damage from weather in weatherproof enclosures.

1.7 Warranty

- A Provide manufacturer's limited warranty. Warranty to cover defects in materials and workmanship.

Part 2 Products

2.1 Manufacturers

- A Contract Documents are based on products by Ecoglo International Ltd. ([www.ecoglo.com](http://www.ecoglo.com))
- B Substitutions: [Under provisions of Division 01.] [Not permitted.]

2.2 Materials

- A High visibility flat panel manufactured from rigid photoluminescent PVC sheet with clear acrylic overlay.
- B Signs to meet luminance specifications of UL 1994 Standard for Luminous Egress Path Marking Systems.

2.3 Components

- A Basis of design: Ecoglo Emergency Evacuation Plans

## 1 Description:

- a. Requires not less than 100 lux of illumination continuously during building occupancy
- b. Stores energy from ambient daylight, fluorescent, metal halide, mercury vapor or LED light
- c. No electricity or batteries required

[Click here](#) to view *Ecoglo Evacuation Maps*

Product Code	Product Name	Sign Definition	Sign Size
G20-EVAC216330	Evacuation Map	Emergency Evacuation Plan	216mm x 330mm
G20-EVAC457610	Evacuation Map	Emergency Evacuation Plan	457mm x 610mm
G20-EVAC610914	Evacuation Map	Emergency Evacuation Plan	610mm x 914mm

## Part 3 Execution

## 3.1 Examination

- A Before installation, examine surfaces on which the work of this section depends. Notify [Contractor] if substrates do not comply with requirements of this section.
- B Do not proceed with work of this Section until all unsatisfactory conditions have been corrected, if any.
- C Commencement of Work will imply acceptance of surfaces.

## 3.2 Preparation

- A Clean surfaces to remove dirt, dust, grease, oil, loose material, frost, paint, coatings, or other matter that may affect bonding or installation of photoluminescent products.
- B Test substrates for fit with products before using adhesives or mechanical fastening.

## 3.3 Installation

- A Unless otherwise indicated in the specifications, install products in accordance with manufacturer's instructions. Obtain written instructions directly from manufacturer.

## 3.4 Cleaning

- A At completion of installation, clean soiled product surfaces in accordance with manufacturer's instructions.

## 3.5 Waste Management and Disposal

- A Separate waste materials for [reuse] [and] [recycling] at nearest used building materials facility.

## 3.6 Protection

- A Do not allow heavy objects to come into contact with installed products.

End of Section

Appendices to

**Ecoglo International Ltd**

**Technical Manual**

**for**

**Emergency Evacuation Plans**

**Contents:**

Appendix 1 - Product Data Sheet..... 9

Appendix 2 - Installation Instructions..... 11

Appendix 3 - Product Test Report..... 14

Appendix 4 - Safety Data Sheet..... 17

Appendix 5 - Quality Assurance Document..... 23

Appendix 6 - Warranty..... 25

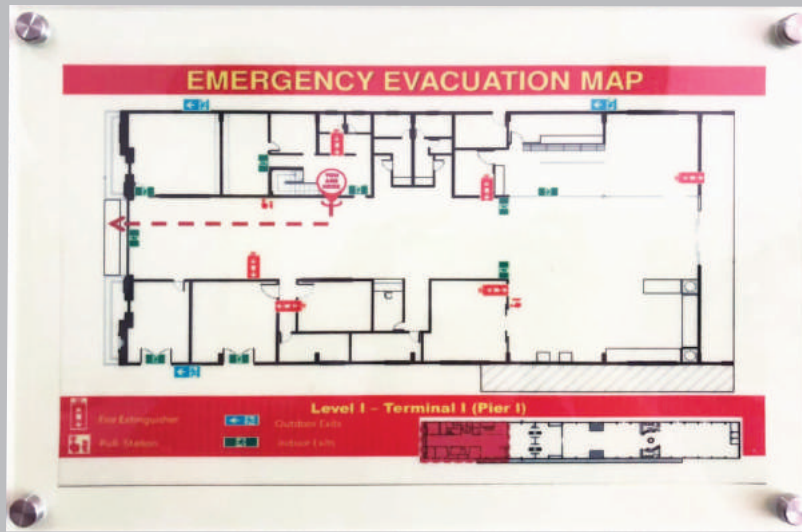
Appendix 7 - Maintenance & Cleaning Instructions..... 27



## Appendix 1

Ecoglo International Ltd

### **Product Data Sheet**



**Ecoglo G20 EVAC Signs are designed to highlight the emergency evacuation plan of the building and to be readable in case of power failure.**

### SIGN DEFINITION

Emergency Evacuation Plan

### COMPLIANCE

Ecoglo G20 EVAC Signs meet luminance specifications of internationally accepted UL 1994 Standard for Luminous Egress Path Marking Systems. The sign is compliant with SECTION 10.2.5.13 of the Fire Code of the Philippines, Revised 2019.

### PERFORMANCE

The signs will be operational for up to 90 minutes after failure of the main lighting provided they have been continuously illuminated by a reliable light source with a minimum of 100 lux.

### SUPPLY

The sign is available in the sizes below.

PRODUCT CODE	PRODUCT NAME	SIGN DEFINITION	SIGN SIZE
G20-EVAC216330	Evacuation Map	Emergency Evacuation Plan	216mm x 330mm
G20-EVAC457610	Evacuation Map	Emergency Evacuation Plan	457mm x 610mm
G20-EVAC610914	Evacuation Map	Emergency Evacuation Plan	610mm x 914

*Note: All finished artwork must be submitted in PDF or vector format when ordering the sign.*

### COMPOSITION

The high visibility flat panel is manufactured from rigid photo-luminescent PVC sheet with a clear acrylic overlay.

### INSTALLATION

Metal stand-off fixers (supplied) are the main method of installation, however, please consult Ecoglo for other fixing methods if required.

### Contact

#### Ecoglo Fire Protection Product Trading

**Address:** 36-C Gloria Street, Barangay San Carlos, Binangonan Rizal 1940, Philippines

**Office:** +632-8802-4760

**Cell:** +63917-514-6803

+63968-356-4773

**Email:** keith.phillips@ecoglo.com

**Web:** www.ecoglo.ph www.EcogloAsia.com www.EcogloVenues.com

## Appendix 2

Ecoglo International Ltd

# **Installation Instructions**



*Installation Instructions For*

# G20 Emergency Evacuation Plans

Surface Mounted



# Installation Instructions for G20 Emergency Evacuation Plans

## Surface Mounted

### 1. Positioning of Signs

- Sign must be mounted where it will not be obscured from view.
- Hold sign against wall and mark through fixer holes where sign is to be placed. Use a spirit level if necessary to ensure sign is straight.

*Note: Ensure sign is oriented to correspond with actual floor layout as perceived by the viewer.*

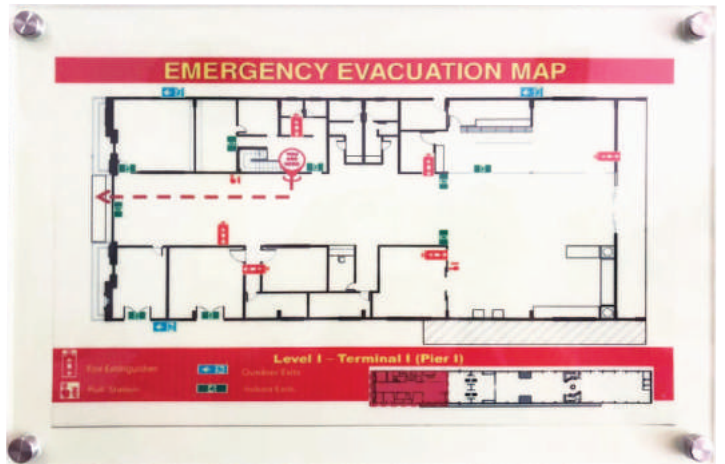
### 2. Placement of Signs

- Unscrew top fixer from barrel of supplied stand-off fixers.
- Line up barrel with mark on wall and screw wall fixer through barrel into wall.
- Match mounting holes on the sign to barrels mounted on wall.
- Screw top fixer into barrel.

### 3 Maintenance of Signs

- Regular wiping with a soft cloth or brush is recommended to keep the sign clean.
- If the sign is noticeably dirty, clean with a sponge or cloth.

*See Maintenance and Cleaning instructions for more detailed information.*



## Appendix 3

Ecoglo International Ltd

# **Product Test Report**

Test Completed: DIN 67510-1 Phosphorescent pigments and products -  
Part 1: Measurement and marking at the producer.

Results on next page show that the material G20 Emergency Evacuation Plans is manufactured from meets luminance specifications of UL 1994 Standard for Safety Luminous Egress Path Marking Systems which requires a minimum luminance of 30mcd/m<sup>2</sup> at 10 minutes and 5mcd/m<sup>2</sup> after 90 minutes.

# Lanxi minhui photoluminescent Co. Ltd

Measuring Protocol no.: 1

Product designation: MH-B-G200  
 Article/Sample No.: 20230328  
 Type of material:

Type of lighting source: D65  
 Illuminance on sample: E = 1001 lx  
 Filename: G200.101  
 Measurement performance:  
 Date: 202305022

Temperature: 25 癆  
 Period of conditioning:  
 Size of measuring field:  
 Starttime: 09:36

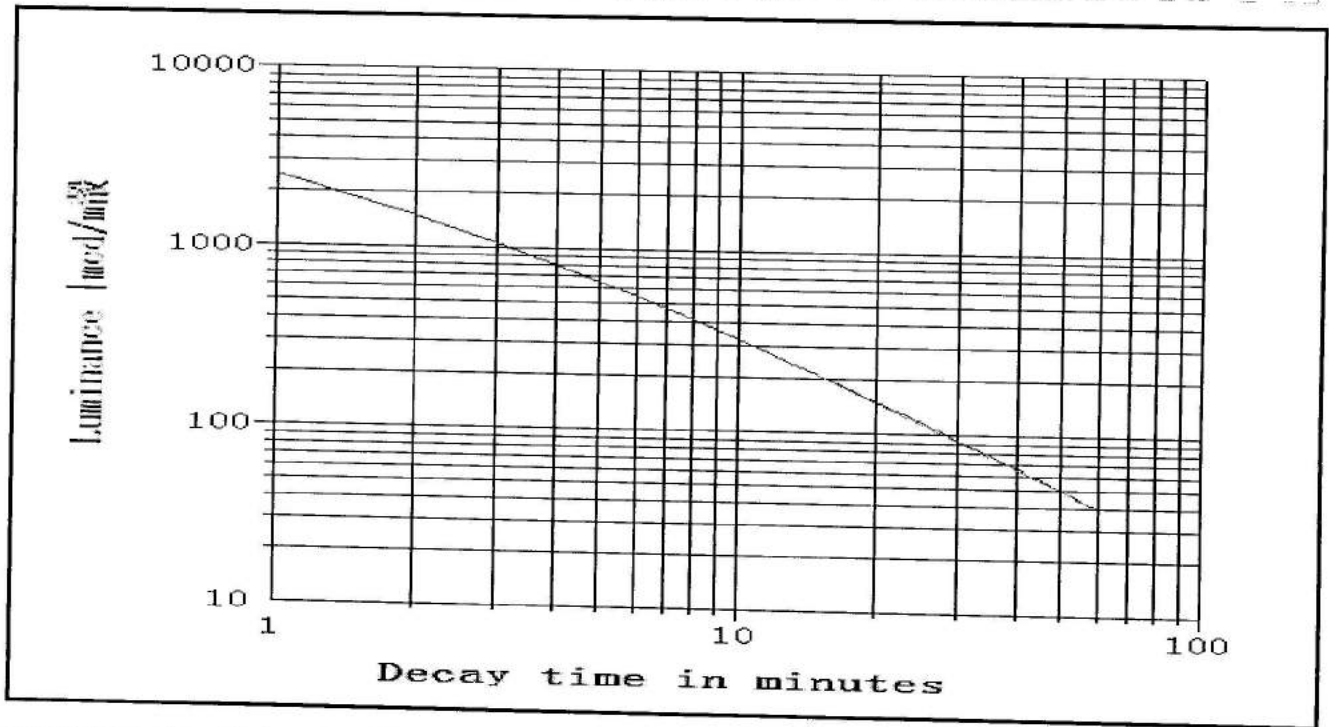
Remarks: D65 1000LX 5MIN

## Measurement according to DIN 67 510 Part 1

Luminance after 2 minutes: 1488 mcd/m<sup>2</sup>  
 Luminance after 10 minutes: 323.3 mcd/m<sup>2</sup>  
 Luminance after 30 minutes: 93 mcd/m<sup>2</sup>  
 Luminance after 60 minutes: 39.8 mcd/m<sup>2</sup>  
 Luminance after 120 minutes: 17.5 mcd/m<sup>2</sup> evaluated from readings >= 15 minutes  
 Luminance after 3580 minutes: .3 mcd/m<sup>2</sup> evaluated from readings >= 15 Minutes (Decay time)

Afterglowing characteristics: 1488 / 323.3 / 39.8 - 3580 -G-G-

min	mcd / m <sup>2</sup> min	mcd / m <sup>2</sup> min	mcd / m <sup>2</sup> min	mcd / m <sup>2</sup> min	mcd / m <sup>2</sup> min	mcd / m <sup>2</sup> 0	7890	1	2479	2	1488
6	549.1	7	469.7	8	409.2	9	361.6	10	323.3	11	291.9
12	265.6	13	243.2	14	224.1	15	207.5	16	193	17	180.3
18	169	19	158.9	20	149.8	21	141.6	22	134.1	23	127.4
24	121.2	25	115.5	26	110.2	27	105.4	28	101	29	96.9
30	93	31	89.5	32	86.1	33	83	34	80.1	35	77.3
36	74.7	37	72.2	38	69.59	39	67.87	40	65.79	41	63.83
42	61.97	43	60.2	44	58.54	45	56.94	46	55.42	47	53.97
48	52.59	49	51.25	50	49.98	51	48.75	52	47.58	53	46.46
54	45.38	55	44.34	56	43.36	57	42.39	58	41.49	59	40.61
60	39.76										



Measuring device: Photometer 11B247    Manufacturer: LMT Lichtmesstechnik GmbH Berlin    Type: B 520

Lanxi minhui photoluminescent Co. Ltd  
 No 18, Yuezhong road  
 Lanxi, Zhejiang, China



## Appendix 4

Ecoglo International Ltd

# **Safety Data Sheet**



## ZHEJIANG MINHUI LUMINOUS TECHNOLOGY CO.,LTD.

Address: No. 668, Yingbin Road, Shanghua District, Lanxi City, Zhejiang Province, China, P.C: 321100.

TEL:+86-579-88948789;88988918

FAX:+86-579-88948948

Http://www.mphotoluminescent.com

E-mail:sales@mphotoluminescent.com

# Photoluminescent PVC rigid sheet Safety Data Sheet

## 1. PRODUCT IDENTIFICATION

**Commercial product name:** Photoluminescent PVC rigid sheet

**Producer:** ZHEJIANG MINHUI LUMINOUS TECHNOLOGY CO.,LTD.

**Address:** No. 668, Yingbin Road, Shanghua District, Lanxi City, Zhejiang Province, China. P.c: 321100

**Telephone:**86-579-88948789;88948900

**FAX:**86-579-88948948

[Http://www.mphotoluminescent.com](http://www.mphotoluminescent.com)

E-mail:sales@mphotoluminescent.com

**Product Code:** MH-B-GXXX

**Chemical Family:** Photoluminescent Polymer of Chlorinated Hydrocarbon

**Chemical Name:** Polyvinyl Chloride + Photoluminescent pigment

**CAS No:** 9002-86-2

**Synonyms:** PL Rigid PVC Sheet

## 2. PRODUCT INGREDIENTS

**No. Components CAS No. Percent (%) OSHA PEL**

1 PVC 9002-86-2 50 - 80%

2 Photoluminescent pigment 10% - 40%

3 Proprietary Mixtures 10% Not established

## 3. PHYSICAL/CHEMICAL PROPERTIES

**Physical Form:** Solid Sheet

**Color:** Yellow-green

**Odor:** Insignificant

**Boiling Point:** Not applicable

**Melting Point:** Not established

**Freezing Point:** Not applicable

**Solubility in Water:** None

**Specific Gravity:** 0.8 - 2.4 (water = 1)

**Vapor Density:** Not applicable (air = 1)

**Evaporation Rate:** None (Butyl Acetate = 1)

**Vapor Pressure:** Not applicable

**% Volatile:** None

**pH:** Not applicable

The physical data presented above are typical values and should not be construed as a specification.

## 4. FIRE HAZARD DATA AND FIGHTING METHOD



## ZHEJIANG MINHUI LUMINOUS TECHNOLOGY CO.,LTD.

Address: No. 668, Yingbin Road, Shanghua District, Lanxi City, Zhejiang Province, China, P.C: 321100.

TEL:+86-579-88948789;88988918

FAX:+86-579-88948948

Http://www.mphotoluminescent.com

E-mail:sales@mphotoluminescent.com

**Flash Point:** Not applicable

**Autoignition:** Not applicable

**Flammable Limits**

**In Air (LEL, %)** Not applicable

**(UEL, %)** Not applicable

**Extinguishing Media:** Dry chemical, foam water, or carbon dioxide

**Special Fire Fighting**

**Procedure:** In the event of a fire, wear NIOSH approved, positive pressure, self-contained breathing apparatus (SCBA) and full protective clothing. Evacuate all personnel from danger area. Use dry chemical, foam, water or carbon dioxide to extinguish fire.

**Unusual Fire and Explosion Hazards:**

This product is nonflammable and nonexplosive under normal conditions of use. It will not continue to burn after ignition without an external fire source. When forced to burn, the major gaseous products of the combustion of PVC are carbon monoxide, carbon dioxide, and hydrogen chloride.

## 5. HUMAN HEALTH DATA

**Emergency Overview:** During a fire emergency, avoid inhalation, eye and skin contacts.

**Primary Route(s) of**

**Exposure:** Inhalation, Eye, Skin Contact

**Potential Health Effects and Symptoms of Over-Exposure**

**Eye Contact:** Dust may cause eye irritation

**Skin Contact:** May cause skin irritation

**Inhalation:** May cause discomfort in nose and throat

**Ingestion:** Unlikely

**Medical Conditions Aggravated by Overexposure:**

Available toxicological information and the physical/chemical properties of the material suggest that there is no evidence that this product aggravates an existing medical condition.

**Carcinogenicity:** NTP: No IARC: No OSHA: No

## 6. FIRST AID MEASURES

**Eye Contact:** Immediately flush eyes with water for at least 15 minutes. Do not rub the eyes.

If irritation develops, consult a physician.

**Skin Contact:** Wash affected skin areas with soap and water. If irritation develops, get medical attentions immediately

**Inhalation:** Remove subject to fresh air. If symptoms develop, seek immediate medical attention.

**Ingestion:** Unlikely.



## ZHEJIANG MINHUI LUMINOUS TECHNOLOGY CO.,LTD.

Address: No. 668, Yingbin Road, Shanghua District, Lanxi City, Zhejiang Province, China, P.C: 321100.

TEL:+86-579-88948789;88988918

FAX:+86-579-88948948

Http://www.mphotoluminescent.com

E-mail:sales@mphotoluminescent.com

**Notes to Physician:** Treat symptomatically and supportively.

**Other Instructions:** Never give anything by mouth to an unconscious person.

## 7. EXPOSURE CONTROLS, PERSONAL PROTECTION RECOMMENDATIONS

**Eye Protection:** Wear safety glasses during sheet cutting or fabricating process

**Skin Protection:** Wear gloves and long sleeved clothing when cutting or fabricating sheets.

**Respiratory Protection:** Use NIOSH/MAHA approved dust respirators as needed.

**Engineering Control:** Ventilation Requirements – Local Exhaust

**Required Work/Hygiene** Do not eat, drink, or smoke in work area. Wash hands thoroughly after handling,

**Procedure:** especially before eating, drinking, smoking, chewing, or using restroom facility.

**Exposure Guidelines:**

**No. Components OSHA-PEL ACGIH-TLV**

1 PVC 5 mg/M<sub>3</sub> (as respirable dust) 10 mg/M<sub>3</sub> (as nuisance dust)

## 8. ACCIDENTAL RELEASE CONTROL MEASURES

**Response to Spills:** Not applicable

## 9. HANDLING AND STORAGE

**Handling:** Use with care. Wear gloves if necessary when cutting or fabricating sheet.

**Storage:** Store in a cool dry, well-ventilated area away from sources of extreme heat or fire.

**Container Use:** Not applicable

## 10. STABILITY AND REACTIVITY

**Stability:** Stable

**Conditions to Avoid:** Avoid fire or elevated temperature above 250°C.

**Hazardous**

**Decomposition:** If burned, it will generate carbon dioxide, carbon monoxide and hydrogen chloride.

**Hazardous**

**Polymerization:** Will not occur

## 11. DISPOSAL CONSIDERATIONS

**Disposal Method:** It must be disposed of in accordance with Federal, State and local environmental control regulations.

**Recycle/Reclaim:** Recycling of PVC sheet should be encouraged where possible.

## 12. TRANSPORT INFORMATION

**DOT Shipping Name:** Not listed

**DOT Label:** Not applicable



## ZHEJIANG MINHUI LUMINOUS TECHNOLOGY CO.,LTD.

Address: No. 668, Yingbin Road, Shanghua District, Lanxi City, Zhejiang Province, China, P.C: 321100.

TEL:+86-579-88948789;88988918

FAX:+86-579-88948948

Http://www.mphotoluminescent.com

E-mail:sales@mphotoluminescent.com

**DOT Hazard Class:** Not regulated

**UN/NA Number:** Not applicable

**Hazard Label(s):** Not applicable

**Hazard Placard(s):** Not applicable

**Packing Group:** Not applicable

**Bulk Packaging:** Not applicable

**RQ:** Not applicable

**Emergency Response**

**Guide (ERG) No.:** Not applicable

### 13. TOXICOLOGICAL INFORMATION

The information provided below can be subject to misinterpretation. Therefore, it is essential that the following information be interpreted by individuals trained in its evaluation.

Chemical Toxicity Data

PVC orl-rat TDLo: 210 g/kg/30W-C:ETA

### 14. ECOLOGICAL INFORMATION

No data is available on the adverse effects of this product on the environment. Neither COD nor BOD data are available.

### 15. REGULATORY INFORMATION

#### FEDERAL REGULATORY INFORMATION

**OSHA Status:** Not listed

**EPA Clean Air**

**Act Status:** Not listed

**EPA Clean Water**

**Act Status:** Not listed

**TSCA Status:** PVC is listed on TSCA Inventory (40 CFR710)

**CERCLA RQ:** Not listed

**SARA Title III**

PVC

Section 302\* Section 313\*\* Section 311/312\*\*\*

None None None

\*Reportable quantity of extremely hazardous substance, Sec. 302

\*Threshold planning quantity, extremely hazardous substance, Sec. 302

\*\*Toxic chemical. Sec. 313

\*\*Category as required by Sec 313 (40CFR372.65C). Must be used on Toxic Release Inventory form.

\*\*\*Hazard category for SARA Sec.311/312 reporting H1=acute health hazard, H2=chronic health hazard, P3=fire hazard,

P4=sudden release of pressure hazard, P5=reactive hazard

**RCRA Status:** The product is not an RCRA hazardous waste either by listing or by characteristic.



## ZHEJIANG MINHUI LUMINOUS TECHNOLOGY CO.,LTD.

Address: No. 668, Yingbin Road, Shanghua District, Lanxi City, Zhejiang Province, China, P.C: 321100.

TEL:+86-579-88948789;88988918

FAX:+86-579-88948948

Http://www.mphotoluminescent.com

E-mail:sales@mphotoluminescent.com

---

However, under RCRA, it is the responsibility of the product user to determine at the time of disposal whether a material containing the product or derived from the product should be classified as a hazardous waste (40CFR261.20-24).

### **OTHER REGULATORY INFORMATION**

The following chemicals are specifically listed by individual states; other product-specific health and safety data in other sections of the MSDS may also be applicable for state requirements. For details on your regulatory requirements, you should contact the appropriate agency in your state.

#### **State Chemical Regulation**

Texas PVC Effects Screening Level (ESL) List: short term 50 ug/M<sub>3</sub>; long term 5 ug/M<sub>3</sub>

California Proposition 65: warning – this product contains a chemical, residual VCM, known to the state of California to cause cancer

**Product Name:** PL Rigid PVC Sheet

#### **International**

United Kingdom Occupational Exposure Standards: TWAs total inhalable dust 10 mg/M<sub>3</sub> TWA;

Respirable dust 5mg/M<sub>3</sub>

Germany MAK Value: fine dusts 5 mg/M<sub>3</sub> MAK

## **16. FURTHER INFORMATION**

This information, which describes our product as to possible security requirements, is based on the present state of our knowledge and experience. It is given in good faith but no warranty, expressed or implied, in respect of the quality and properties of our product is made. We can also provide the test certificate for some items, such as toxicity, ISO9001,2000, which have been shown in our catalogues.

## Appendix 5

Ecoglo International Ltd

# **Quality Assurance Document**

# Ecoglo International Ltd

## QUALITY POLICY

**E.I.L** is a world leader in the manufacture of photoluminescent signage and path marking. We pride ourselves on our strong focus on compliance and durability. Our policy is to achieve sustainable growth by offering quality products and service. All of our staff are committed to continual quality improvement. The company has earned respect and credibility, at an international level, as a result of our contributions to building code development around photoluminescent system design.

**E.I.L** maintains an ISO 9001:2015 compliant Business Management System. Management will ensure that all staff are committed to the principles of this system and its continual development.

Our key objectives are:

- To ensure that all products meet contractual and relevant regulatory obligations, both national and international.
- To offer a cost effective and sustainable alternative to traditional electrical lighting that all areas of industry can adopt in a safe and practical manner.
- To offer the most durable photoluminescent products on the market and back them with the best warranty and after-sales support.
- To identify and implement new processes to reduce our product cost without increasing our environmental impact.

Our strategy to achieve these goals is:

- Maintain a high level of staff input on quality control.
- Focus on keeping our staff fully aware of our expected quality output.
- Explore all opportunities to improve our products and processes.
- Effectively recognise the limitations of our product range and work with our clients and competitors to deliver the best result for our clients.
- Be active and engaged in the wider fire safety industry.
- Review any complaints or criticism and use them to construct educational material that assists all levels of industry, both national and international.

**Ecoglo International Ltd.**

77 Kingsley Street  
Christchurch, New Zealand  
www.ecoglo.com

Signed: Trevor Dimond  
 Name: Trevor Dimond  
 Date: 31 March 2023





## Appendix 6

Ecoglo International Ltd

# **Warranty**

## Ecoglo International Limited

### Warranty for Photoluminescent Performance of Non-HTC (High Temperature Curing) Products

1. We warrant the photoluminescent performance of non-HTC Products for a period of:  
**three** years from the date of installation for Products which are positioned **indoors only**.
2. This warranty assumes correct installation and normal conditions of use and maintenance but does not cover normal wear and tear. This warranty does not cover deterioration due to abuse, mistreatment, natural disasters (e.g. fire, flood), exposure to harmful chemicals or environments or any other use or exposure not recommended in our product literature. In particular, this warranty is void in the following circumstances:
  - 2.1 The Products have been misused, neglected, damaged, abused or involved in an accident.
  - 2.2 The Products have been improperly installed, operated, repaired or maintained.
  - 2.3 The Products have been modified.
  - 2.4 The Products have been used outside their stated specifications, capacity and operating parameters.
3. If you have a claim that, in our reasonable judgement, satisfies the terms of this warranty, we shall replace the defective Product (material only).
4. This is an express warranty. It is your sole and exclusive remedy. We disclaim any other express or implied warranties, including warranties of merchantability or fitness for purpose, to the maximum extent permitted by law. Under no circumstances shall we accept liability for any injury to persons, damage to property, loss of profits, loss of operations or other direct, indirect, special, incidental, or consequential losses, costs and damages whether incurred by you, your guests, licensees, invitees or other third parties. Our liability under any circumstance, whether in contract, tort or otherwise, shall not, in the aggregate, exceed the price that you paid for the Product.
5. Some countries do not allow certain disclaimers, limitations or exclusions in warranties. Therefore, the above disclaimers, limitations and exclusions may not apply to you. This warranty gives you specific legal rights. You may have other rights or remedies pursuant to the laws of your country. Nothing in this limited warranty should be construed as limiting or restricting any other right or remedy available to you, except as allowed by the law in your country.

## Appendix 7

Ecoglo International Ltd

# **Maintenance and Cleaning Instructions**

*Instructions For*

# Maintenance and Cleaning

Exit Signs and Escape Path Markings



# Maintenance and Cleaning Instructions For Exit Signs and Escape Path Markings

## Overview

- Regular maintenance and cleaning to remove any obstructions or built up dirt and deposits will ensure the Ecoglo products continue performing to expectation.
- The photoluminescence will continue performing even after UV exposure or exposure to moisture.

## Floor Mounted Products

- Check nothing is covering up the product.
- Visually inspect for any sign of damage.
- Vacuuming or brushing with a stiff bristle head brush (dry or wet) is often enough to keep the strips clean.
- The glowing strip can also be wiped clean with a (dry or wet) sponge or cloth.
- High-pressure water (but not steam cleaning) can also be used.
- Observation will determine if cleaning is required however a regular clean every 4 to 6 weeks or after particularly heavy use should ensure correct performance.

## Wall Mounted Products

- Check nothing is covering up the sign.
- Visually inspect for any sign of damage.
- Dusting with a soft cloth or brush is often enough to keep the signs clean.
- The face of the sign can also be wiped clean with a (dry or wet) sponge or cloth.
- Observation will determine if cleaning is required.

**Ecoglo Fire Protection Product Trading**

Address: 36-C Gloria Street, Barangay San Carlos,  
Binangonan Rizal 1940, Philippines

Office: +632-8802-4760

Cell: +63917-514-6803 / +63968-356-4773

Email: keith.phillips@ecoglo.com

Web: [www.ecoglo.ph](http://www.ecoglo.ph) / [www.EcogloAsia.com](http://www.EcogloAsia.com) /  
[www.EcogloVenues.com](http://www.EcogloVenues.com)

